

A man wearing a red helmet, safety glasses, and a green long-sleeved shirt is climbing a large, weathered tree trunk. He is secured by a yellow rope and a safety harness. The tree trunk is dark and textured, with a white tarp visible at the top. The background is a plain, light gray.

BARA Bugle

FALL 2019

**Julian Dunster:
The Arborist
in our midst**

**Let's talk
about trees:
The Palms of
Broadmead**

**Q&A with
Sgt. Fast,
Saanich
Police**



Broadmead Village
777 Royal Oak Drive
250.881.8252
AnythingButOrdinary.ca



Hi, I'm Mark. **Broadmead resident**, husband, dad, and real estate agent with an exciting new brokerage called **The Agency**.



MARK NELSON
250-661-0175
www.marknelson.realtor



Dr. Chélise Kasun Inc. B.Sc., DMD
250-479-8100
510-777 Royal Oak Dr.
info@artisandentalvictoria.com
www.artisandentalvictoria.com





ROBYN WILDMAN
Dedicated to Real Estate Excellence.
250.818.8522
rwildman@sothebysrealty.ca
robynwildman.com





RUFFELL & BROWN
WINDOW FASHIONS



- Faux Wood Blinds
- Wood Blinds
- Venetian Blinds
- Roman Shades
- Vertical Blinds
- Pleated Shades
- Cellular Shades
- Roller Blinds
- Draperies
- Fabric Treatments
- Soft Shadings
- Valances
- Sheers
- Drapery Rods
- Skylight Shades
- Solar Shades
- Motorization
- Interior Shutters
- Guaranteed Fit
- Best Price Policy
- Repair & Service
- Installation Services
- Residential
- Commercial

VISIT VICTORIA'S LARGEST WINDOW FASHIONS SHOWROOM
FOR FREE 'SHOP-AT-HOME' SERVICE CALL
250.384.1230
OR VISIT: WWW.RUFFELL-BROWN.COM
1-2745 Bridge Street, Victoria | Mon-Fri: 9-5 Sat 9:30 to 4



MCLEANREALESTATEGROUP.CA
Toll free: 1.800.663.2121
info@mcleanrealestategroup.ca



VICTORIA'S REAL ESTATE EXPERTS
4440 Chatterton Way Victoria, BC V8X 5J2



BAAN THAI
WOK AND BAR

BROADMEAD VILLAGE
400-777 ROYAL OAK DRIVE
250-658-0057



| Mon - Thu | Friday | Saturday | Sunday |
|------------|------------|------------|-----------|
| 11am - 9pm | 11am - 9pm | 11am - 9pm | 5pm - 9pm |



fūdo
Japanese Restaurant



425 - 777 Royal Oak Dr. (Broadmead Village)
778-265-3328

President's Message

Doug Baer



BARA sponsored several events this fall. These included: our Summer Music program on each Saturday in August and Community Day in September, both at Broadmead Village; Tuesday evening Bluegrass "jam" sessions at Emily Carr Park; and a meeting with Saanich Mayor Fred Haynes.

BARA also organized and co-sponsored, along with the Cordova Bay Association for Community Affairs and the Blenkinsop Valley Community Association, an all-candidates (Saanich-Gulf Islands) meeting for the recent federal election.

Meeting with Saanich Mayor Haynes

We appreciate that Mayor Haynes took time from his vacation to attend a BARA Board meeting early this fall. We discussed property restrictions in Broadmead, traffic on Emily Carr Drive, housing in Saanich, and ways we can further co-operate with Saanich Parks.

The Emily Carr speeding issue is clearly a challenge. Haynes described Emily Carr as "the most studied street in Saanich." City hall staff believe that current traffic is "within parameters" and that "speeding is not generally excessive".

One problem we would note is that Saanich police have reported that most drivers pulled over for speeding are usually Broadmead residents! Thus, part of our efforts must include asking Broadmead residents to please drive carefully along Emily Carr and try not to exceed the speed limit.

We will also lobby with other community associations for a possible Saanich-wide lowering of residential speed limits, and if residents feel this might help, asking for lighted crosswalks at one or two locations along the street. The BARA Board will continue to explore ways in which safety on this street can be improved.

Bus Service in Broadmead

BC Transit (Victoria) is currently working on a Broadmead/Cordova Bay local area transit plan, though the next phase of consultations is a bit behind schedule. If you wish to have a say in our community's transit future, please watch our web site: we will post any information we receive as soon as there are any new developments. The Board is hoping to meet with BC Transit staff early in the new year. Feel free to e-mail us with any comments: info@broadmead.ca

What Can BARA Do for You?

We are always interested in new activities to support our residents and the community. Please send suggestions to: info@broadmead.ca or PresidentBARA@gmail.com

Editor's Corner

Beverley Merson

Dear Readers:

When Bugle committee members were contemplating articles for this edition, focusing on trees was an automatic choice. We already had our sights set on arborist Dr. Julian Dunster as our "Broadmead Notable." BARA Board member Larry Statland had previously offered to discuss landscaping-nature scaping under trees in his "Green Spaces Column."

The chief challenge in writing the article on Julian was to adequately cover his staggering number of achievements and experiences. We are pleased to highlight his connection to a famous Vancouver tourist attraction, the Stanley Park hollow tree stump.

Nancy Craig said her palms trees often garnered comments and might be the basis for a fun feature. We took this idea seriously and are glad that we did. We would not be surprised if, after reading the article, residents set up scavenger-hunt parties to see who can locate the most palm trees in Broadmead!

Palm trees aside, Broadmead residents increasingly display a penchant for ecologically friendly environs. Russ Pym's article, "Don't Feed the Ducks" cautions us not to disrupt the balance of nature. It was so pleasurable to feed the ducks, but now after reading his article, I definitely won't be doing that anymore.

Safety and crime prevention have been covered in "Block Watch" articles in past Bugles. We address these in a Q&A in this issue, and you are urged to visit the websites listed. I was particularly surprised to see the names of Broadmead parks included in the list of parks in which overnight sheltering is permitted.

Traffic and sharing the road are important to Broadmead residents. This topic is mentioned in the "President's Message", the Q&A with Saanich Police, and the Traffic Safety article. If you follow the links from the website, you will find detailed graphs of the surprising results of the traffic monitoring with specific Broadmead streets.

It is such a pleasure to work on our Bugle team. Thanks to contributors for your articles and accompanying images. Thanks to Bruce and Nancy for their hours of work and dedicaton in producing this issue.

Happy holidays to all of you, from all of us!

*"I finally got eight hours of sleep.
It took me three days, but I did it."*

Broadmead Area Residents' Association

President: Doug Baer

Vice President: Wayne Neumann

Treasurer: Larry Statland

Secretary: Ann Wilson

Contact BARA:

info@broadmead.ca

Directors:

Nancy Craig

Eleanor James

Lynne Jordon

Tony Matergio

Jim Pearson

Ross Taylor

Bugle Production & Distribution:

Managing Editor: Beverley Merson

Layout Manager: Bruce More

Graphics Contributor: Nancy Craig

Editorial Assistant: Ann Wilson

Copy Editor: Eleanor James

Advertising: Ross Taylor

Distribution: Glen MacDonald,

Nancy Craig, Dennis Abbott and 35 carriers

Welcome to New BARA Board Member: Lynne Jordon

I joined the BARA Board last April shortly after I retired from a library career. I deliver BARA Welcome Packages, often with Minnie, my Chihuahua. It's wonderful to connect with folks (and a treat when I get invited in to see newly renovated homes). I am a competitive ballroom dancer, President of the Victoria Ballroom Dance Society, and a new member of the Royal Victoria Yacht Club. Initially intimidated by Broadmead's towering trees and their challenges, I now appreciate our green oasis. My daughter says I'm the "best mom ever." She knows Christmas is just around the corner.



Dear Bugle Carriers

The BARA Board, Bugle Committee, and Broadmead residents join in thanking you for your service of delivering all 2000 plus BARA Bugle newsletters.

We appreciate that 'rain or shine' you are faithfully out there delivering to the homes on your route twice a year. This Bugle is one of the things that all Broadmead residents, BARA members or not, have in common, and through it Broadmead residents stay apprised of community issues, interesting news, and community events designed to offer entertainment and information. It introduces us to some pretty amazing residents in our midst. Most importantly, it helps bind all of us in Broadmead together which keeps our community strong.

Again, thank you!

Crime and Safety in Broadmead: An Interview with Saanich Police

Beverley Merson

Broadmead residents perceive that we live in a safe area, and I wanted to verify that so I approached Sargeant Julie Fast, Public Information Officer, Saanich Police, with several questions.

Q. Broadmead residents believe that we live in a safe community. Regarding crime reported, how safe are we?
A. Speaking for the whole of our jurisdiction, Saanich is safe. Most calls relate to traffic: crashes, specific vehicles/drivers, patterns of driving behaviour on specific roads, parking, speeding along the major routes including Royal Oak Ave, Emily Carr Drive, and Ambleswood Drive. We respond by routinely conducting speed assessments and post the results on our neighbourhood speed report website. (<https://www.saanichpolice.ca/index.php/public-information/neighbourhood-speed-reports>) This guides our awareness and enforcement projects.

Property crime, primarily theft from autos, is one of the biggest complaints, and no area in Saanich is immune. It is a crime of opportunity, and most cars affected were unlocked. The theft can happen in silence: nothing needs to be smashed or pried, the thief can be in and out of a car in moments by trying door handles until they find one unlocked. Wallets and purses (believe it or not), cash/coins, electronics/laptops/GPS units, and tools are common targets. When wallets/purses are stolen, the suspect will often use the credit cards to make quick, low-value purchases immediately. The real danger is identity theft; this can lead to long-term and significant consequences. Never leave anything of value, and always lock your car.

Fraud and scams are an ever-growing concern: there are a lot of scams out there. A valuable source of information is the Canadian Anti-Fraud Centre. (<http://www.antifraudcentre-centreantifraude.ca/index-eng.htm>)

Q. What are Broadmead 'call for service' statistics compared to Saanich?
A. In 2018, the total was 736. In comparison: the total in Saanich was 32,800. The majority concern bylaw complains such as noise and parking, driving complaints, and collisions.
Q. I have been personally involved in two cases of homeless people sleeping in cars on my street. How should we handle this?
A. Homelessness is a broad topic, and one that involves not only the police, but also local/provincial/federal agencies. We recognize that there is a small population in Saanich who are homeless for a variety of reasons. It is not a crime to be homeless, and we don't treat it as such. However, we can respond to calls where there is concern for their well-being if their presence and activities are suspicious, or if a person is breaking the law.

Saanich amended a bylaw in 2018 allowing for temporary overnight sheltering in 102 parks across Saanich to specifically address this. McMinn, Outerbridge, Emily Carr, and Broadmead Parks are on that list. Here is a link to an information page about the bylaw. (<https://www.saanich.ca/assets/Parks~Recreation~and~Community~Services/Documents/Sheltering-in-parks2018.pdf>)

Q. How can the residents of Broadmead help deal with homelessness?
A. The best way is to donate to reputable agencies and programs that support people facing this situation.
Q. How do we alleviate issues between drivers and pedestrians on our streets?
A. Streets are designed for traffic flow, period. Both need to be courteous.

The Palms of Broadmead

Nancy Craig

Broadmead, part of the early March Greater Victoria "flower count", an annual taunting to the rest of Canada, has one more measure of weather superiority. We are one of the few Canadian neighbourhoods whose temperate weather supports the year-round growth of palm trees.



A quick look on the internet reveals many palm locations including Fairfield, Oak Bay, University of Victoria, and Saanich Municipal Hall. There is no mention of palm trees in Broadmead. This has to be rectified! Until one goes in search of them, it is impossible to know how popular these fascinating trees are for our residents. There are homes that feature ten or more, have them spot-lit in the evening, where they have reached more than 20 feet, and where "baby palms" are 30 years old.



The windmill palm, *Trachycarpus Fortunei*, is one of the most common ones in Broadmead. Also known as the Chinese windmill palm, or Chusan palm, it is native to central China, southern Japan, south to northern Myanmar and northern India.

Year in, year out, palms face our west coast climate. Hardy enough to withstand snow and wind, perhaps their worst enemies, they persist. They are non-invasive and generally pest free, happy with ample irrigation and fertile, well-drained soil.

When were the first palms planted in Broadmead and by whom? While the answers are elusive, here are a few comments from palm-owning Broadmead residents.

"I don't know; I inherited it from the previous owner."

"I was born and raised in Montreal where lawns were covered in snow and ice sometimes from October/November to March. The only green, leafy plants were indoors. Palms represented the tropics. When we moved to Victoria 13 years ago, we promptly planted our windmill palm, well, just because it could grow here!"

"They remind me of exotic places."

"We had yuccas and dracaena palms, and we felt they added to the tropical look of our garden."

"These palms make a wonderful focal point in our landscape."

If you want to purchase a palm, it is only a matter of searching our local gardening centres.



Green Spaces: Gardening Under the Trees

Larry Statland

Nurture the unique natural environment that makes Broadmead such a special place to live. In the original concept and design of Broadmead, houses were nestled into the natural landscape amongst the large trees of the Coastal Douglas fir and Garry oak habitats. Although living in the forest is a desirable feature, landscaping under these large trees can be challenging.

The soils are acidic and shaded. In winter, they are wet and saturated, and in summer we have a seasonal drought. Attempts to grow grass and typical garden plants can be met with limited success. Over time, yards can become full of non-native invasive plants or support no vegetation at all and be reduced to bare soil.

One solution to this challenge is "nature scaping". This is an approach to landscape design which uses native plants and gardening techniques that take advantage of natural systems and the existing ecology in our yards. Nature scaping benefits include:

- Native plants are adapted to living under the forest canopy and do well in our local conditions. Once established, these plants require little or no maintenance.
- The need for water, energy, and chemical usage is reduced.
- It provides habitat for birds and other wildlife and supports biodiversity and rare local ecosystems.
- It enhances a defining feature of our Broadmead neighborhood.

How to Get Started
Nature scaping an entire yard can be a daunting task. Over time as homeowners have tried traditional gardening, much of the native vegetation has been removed, but remnants can still be found. Identify native plants and habitat already growing in your yard and support and expand these areas. Or, start small with a corner or bed that is looking particularly bare. Contact us at info@broadmead.ca for a BARA consultation/referral for some pointers to help you get started.

On-line resources: Saanich Nature Scape Program: www.saanich.ca/EN/main/community/natural-environment/naturescape-bc-program-natural-habitats

- *Garry Oak Gardeners Handbook*: native plant propagation, species, nurseries <http://www.goert.ca>
- Nature Scape Kit: www.naturescapebc.ca
- Habitat Acquisition Trust: Gardening with Native Plants. <http://www.hat.bc.ca/>
- Victoria Natural History Society: local flora and fauna www.naturevictoria.ca

Books:

- *Gardening with Native Plants of the Pacific Northwest* (Arthur Kruckeburg, 1996)
- *Native Plants in the Coastal Garden*: (April Pettinger (with Brenda Costanzo), 2002)

The Arborist in Our Midst: Dr. Julian Dunster

Beverley Merson

There are the arborists who stand with you and try to come up with a plan to prune your trees; those who are talented, knowledgeable, and experienced in tending trees and planning projects; and, then there is Broadmead's Julian Dunster, Ph.D. He is in a class of his own.



Julian's expertise has long been sought internationally in countries including: the U.S.A., Great Britain, Australia, New Zealand, China, Chile, Scandinavian countries and Hong Kong. In Nepal, he wrote the national environmental impact assessment guidelines for forestry which were then passed into legislation.

One project with which many Broadmead residents may be familiar is the preservation of the Hollow Tree in Stanley Park. Estimated to be perhaps as much as 1000 years old, the massive western red cedar stump has a circumference of 60 feet and has been one of the most famous tourist attractions in Vancouver.

A windstorm in 2006 left it at a precarious tilt, and the Parks Board wanted to cut it down. It was rescued by a team of volunteers, and over an eighteen-month period, Julian and the team designed and installed the steel tripod structure that now holds the tree in place, allowing it to be restored to its photogenic glory days. The movie, *The Hollow Tree* has been screened on Knowledge Network.

The interview for this article took place at Julian's and his wife, Kerry's home in Broadmead. It was the first home

built in Broadmead. The home is a testament to Julian's being a master of trades. He made many home upgrades partially based on ingenuity, the experience of building his own home on Bowen Island, and on his wood-working talents.

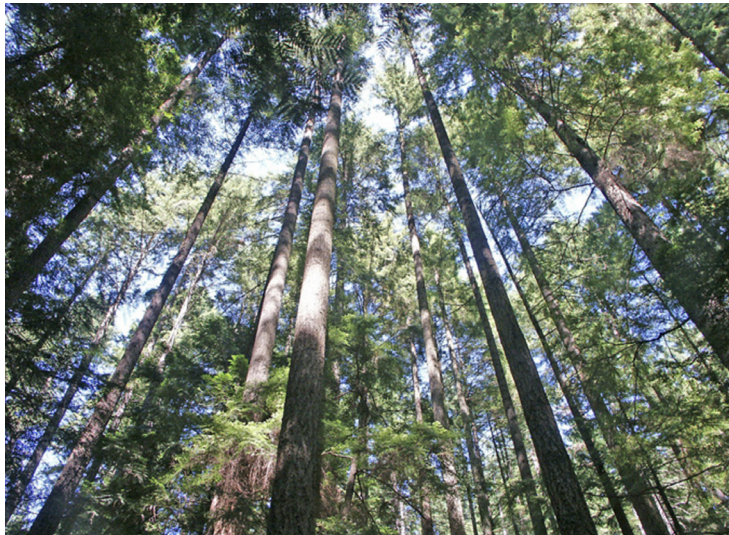
His office is a treasure trove of files, reference material, all sorts of field apparatus, samples of petrified wood and fossils, and interesting charts and photos. It was the kind of office that looks like chaos but is actually an organized myriad of project material that Julian (but nobody else) understands.

Julian describes himself as a quiet maverick. I found him to be very approachable, unassuming, and an excellent communicator while he was talking about his background and his work.

Julian also places high value on curiosity. "It's what makes for good science and innovation." He sets high standards for himself and for those working in his field. I also got the sense that he has little time for those who show no interest in improving their skills. He a problem solver, and if he thinks he is right, he comfortably pursues his ideas to make things happen.

Julian was born and raised in Derby, England where he spent his childhood. He described himself as a youngster who was frequently ill, missed a lot of school, and deplored math. He liked being outdoors and working with his hands.

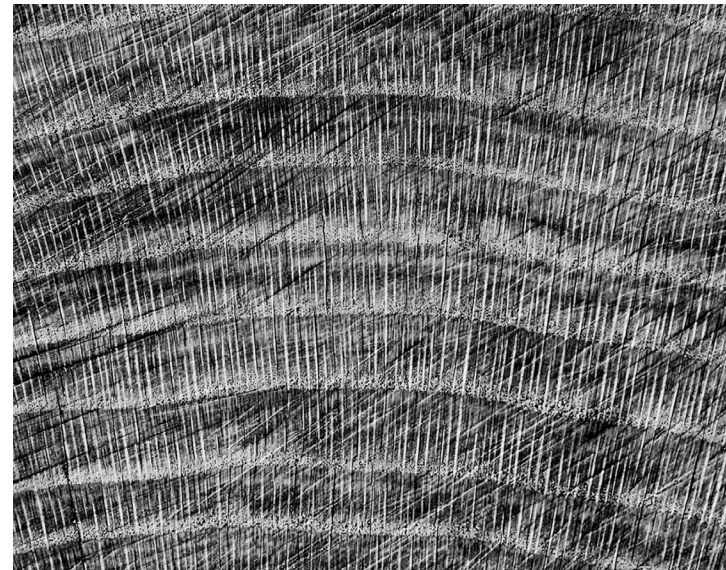
When he was older, Julian distinguished himself as the first person in his family to attend university. While studying forestry at Bangor University in North Wales, he had two years of fun hiking and rock climbing, followed by a third year of intense study. During that time, he was appointed to the technical committee of the British Mountaineering Council and worked with several companies on carabiner and body harness designs. He gave his first public lecture at the age of twenty and has not stopped since then. His academic efforts were rewarded with seven offers to undertake a master's degree in Canada, and he chose to come to UBC because he was attracted to the trees and mountaineering opportunities. He completed his



masters there, sponsored by WorkSafe BC to study the use of helicopters in forestry operations. This included reviewing work on igniting slash burns from helicopters using assorted techniques such as table tennis balls filled with slow fuse chemicals, as well as spraying napalm from barrels slung under the helicopter!

After completing his masters, Julian returned to England for 10 months where he worked on replanting trees on reclaimed coal mines. He returned to Canada, and while looking for full time work, he did many odd jobs such as digging trenches, painting houses, gardening, and staking gold claims in Interior B.C.

Later, Julian worked for the Ministry of Forests in Golden. It was during that time, that he took several courses in resource planning at the Banff School of Management. That motivated him to pursue his doctorate in regional planning and resource development at the University of Waterloo. In the early 90's, he formed Dunster & Associates which



Oak

provides professional services in consulting arboriculture, timber testing, and land use planning for private and municipal clients. He has since authored five books and dozens of articles, many of which are now standard resources in his field. His latest book, *Trees and the Law in Canada*, has already garnered critical acclaim in the legal community.

Julian holds multiple accreditations and awards. His curriculum vitae lists his many professional activities, peer-reviewed publications, and dozens upon dozens of papers, lectures, workshops, and seminars. He is a registered professional forester, a registered professional planner, a certified arborist and an honorary life member of the International Society of Arboriculture (ISA) and the Pacific Northwest Chapter of the ISA. His most recent award was the R. W. Harris Author's Citation in 2019 which is granted to authors for sustained excellence in the publication of timely information pertaining to the field of arboriculture.

Julian's current goals are to mentor and promulgate professionalism in the millennials who are now entering the field. He hopes to inspire them to ask research questions and to help them acquire pragmatic experience.



Golden Ears

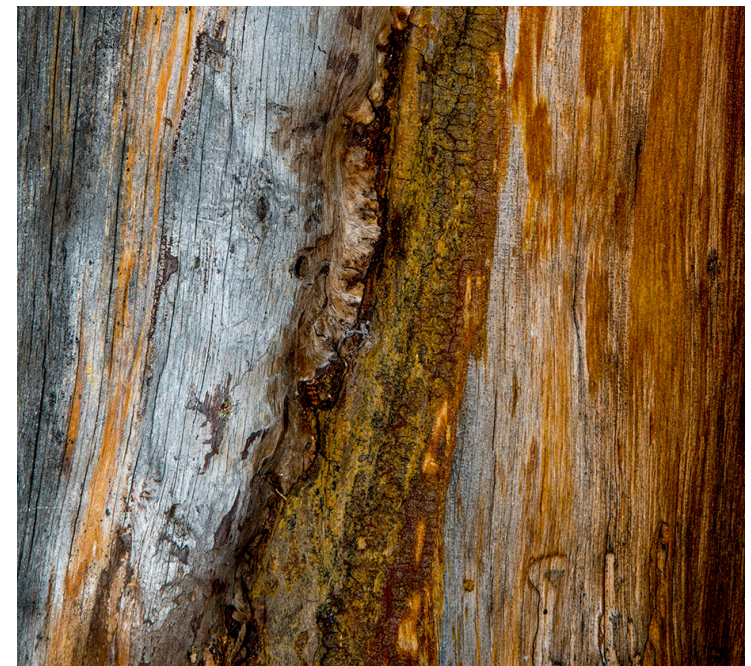
Julian is also a gifted photographer, and his photo files include a staggering number of images of trees, and artful photos of line and shadow patterns. A few grace some walls in his home.

When asked, "What do you think of the longevity of our trees in Broadmead?" he replied that climate change and summer droughts will take its toll, and we should expect to see changes in forest cover in the coming decades as some of the larger trees die out. He suggested that we keep a watch on the health of our trees and begin to consider a program of introducing younger, less shade creating varieties.

You may see Julian in our neighbourhood, as he consults with homeowners who ask him to evaluate the health of their trees. You may also remember him as a past, respected, and greatly contributing BARA Board member.

It was a pleasure to interview Julian and lovely to meet Kerry.

To learn more, please check out his website: <https://dunster.ca>



Sedona Ponderosa Pine
(All tree art photos by Julian Dunster)

Summer Music at Broadmead, 2019
Sophie Siebert



Another August of stunning island talent! This year's Summer Music at Broadmead – a joint effort of BARA and Broadmead Village – as always, presented four ensembles and four genres of music. Some of our audience came to hear their favourite group or musical style, and an increasing number came to open their ears to less familiar sounds, to sample new "tastes".

Our series began with The Flying Saucers: great Victoria jazzers playing songs from the '30s, '40s (and a little '50s), arguably the golden age of North American melody, rhythm, and lyrics – music that will outlast us all. Their fine reputation enticed local "swingers" to attend, who in turn inspired the rest of us to try out our less agile feet on the outdoor dance floor.

The following Saturday, Knacker's Yard: young Celtic musicians extraordinaire, wowing the crowd with their fine musicianship and high energy. The post-concert lineup for CDs signalled a bright future for the already popular group. Next in the lineup, Bijou de Bayou: playing familiar Cajun tunes and adding to others the signature Cajun spice (accordion essential) and upbeat vibe.

The last of our series? The lues...again. We showcased Bill Johnson Blues Band last year, but can we ever have too much blues? This time, Harris Gilmore and the Mojos: Harris, with wailing harmonica and gritty vocals, performing classic blues tunes as well as his own originals, with a backup band including the electrified and electrifying guitar work of Al Sabourin who has been featured at Summer Music in the past, when he played Spanish acoustic guitar. His mastery magically makes every type of music he plays seem his unique specialty. A fitting finale. We were sometimes not blessed with perfect weather, but



we were always blessed with top-notch players and listeners. Thank you to Nancy Criag for her help, and a special thank you to Grosvenor Canada Limited for its continued, generous support of this popular event.

Saanich Parks Update
Beverley Merson

McMinn Park News

Gary Darroch, Manager, Park Planning, Design and Development, has provided us with news specifically about Broadmead.

The small youth bike park, on the border of Broadmead (part of phase two of the park improvement plan), has been postponed. Unfortunately, the contractor designing and building the bike facility had to delay the project due to unforeseen circumstances that were beyond his or Saanich's control.

Parks had hoped that the project would be delayed only a couple of months, but it has proved to be somewhat longer. By the time the contractor was available, fall had begun and there was no desire to start construction during these wet months. It has been rescheduled for next spring when the site will be drier.

The public washroom building (also part of phase two) was delayed; it is being considered within a larger analysis of park system washroom needs. The plan will modernize and provide enhanced washroom service to a number of key parks including McMinn. The washroom building will be installed in 2020.

Pathways & Park Signage

These park trails have been resurfaced:

- Parkwood Park
- Perez – the section leading to the tennis court
- Maltwood
- Stoneywood – the connector between Maltwood and Stoneywood
- Rithet's Bog - along Chatterton Way and connector from Dalewood to Chatterton

Saanich Parks is refreshing all of its nearly 100 identification signs. Looking good!

For more information: info@saanichparks.ca



Please do not feed the ducks in Rithet's Pond
Russ Pym

In the past, Rithet's Bog articles have focused on the flora of the bog. In actuality, we would like to remind all, that Rithet's Bog is a NATURE SANCTUARY: its primary purpose is to provide habitat for both native plants and animals.

Our society works to promote the following guidelines: minimize interaction, respect, and observe. We urge all to try to minimize interaction with and impact on the native wildlife. We recommend that people who visit the Bog practice respect for these creatures as wild animals that should be allowed to carry on with their lives as naturally as possible. And, we encourage all to observe, but not interact with the wildlife.

Rithet's Bog is a seasonal wetland, so our ducks will have to leave by mid-summer when the park becomes too dry. They will be forced to congregate with ducks from other seasonal wetlands in the few areas that retain water during late summer. Competition in these situations is intense. Our ducks need finely honed skills to survive.

Whether feeding the ducks food from "healthier" hen scratch to "junk food" breadcrumbs, the effect is the same. It interferes with the maintenance of ducks' foraging skills. Feeding ducklings is especially harmful because learning these same foraging skills is critical to their survival. Ducklings are at the same stage in life as our children are when they are going to school and university learning the skills necessary to earn a living, only nature does not provide a safety net.

Additionally, feeding ducks increases their complacency with humans and their dogs which has the effect of reducing their predator avoidance skills.



Whether it is adults with reduced, or ducklings with poorly learned foraging and predator avoidance skills, our ducks will not be able to compete. They will not eat, or they will be eaten. They will not survive. Nature is unforgiving in these situations.

Feeding ducks also has negative effects on the park as a whole. Feeding ducks can interfere with our habitat restoration work. Our restoration projects try to develop functioning and self-sustaining habitats and ecosystems. Feeding attracts more ducks than a habitat can naturally support and concentrates foraging activity in small areas. This damages the native vegetation we are trying to restore and degrades habitat for both ducks and other species. Also, seed mixes such as hen scratch introduce non-native invasive plant species into the park.

And finally, left-over food attracts rats. We live in a suburban environment with a temperate Mediterranean climate, which is ideal habitat for rats. We must all do our part to minimize the potential for rats in our community.

In summary, although it does sound counterintuitive, not feeding the ducks will help them lead longer and happier lives, and please remember that Rithet's Bog is their home, and we are guests in it.



Traffic Safety
Beverley Merson

When we moved into Broadmead twelve years ago, there was one young person on our street. When Halloween rolled around, we waited for little ghosts, pac-men, witches, bunnies, pirates, ladybugs, and/or a princess or two to arrive at our door.

We were excited to meet the neighbours. 5:30 came and went. No one rang our bell ... 6 rolled into 7, and then 7:30. Still not one person rang our bell. The street was empty. My daughter, all dressed up in her Oscar the Grouch costume, didn't want to wait anymore.

We scooped up an untouched bucket of Halloween goodies and headed out the door. We rang doorbell after doorbell and handed out all of our candies. This year, we had upward of 50 wonderfully costumed Halloweeners. The community has been changing.

We now have to face the question: who owns these sidewalk-less roads? Is it the cars? Is it the kids? Let's have a safe neighbourhood. Let's keep the cars to 50km or under and obey the playground and school 30km speed zones; and let the kids, their parents, dogs, and other pedestrians keep to the curb or on their own lawn when cars approach.

It's better to be safe than angry or sorry.

Saanich Update

Councillor Susan Brice

Dear Broadmead neighbours,

Since the last Bugle publication, Saanich Council has been deeply engaged in setting a Strategic Plan for Saanich. We acknowledge that there are many areas we could pursue on your behalf, but there are limited financial and human resources, so it's critical that your tax dollars are directed to the areas of highest priority.

We have really engaged with staff and council to challenge each other to determine the direction that we must chart in order to ensure our environment, infrastructure, and social programs are meeting the communities long term needs.

We who live in Broadmead chose a community that from its outset established a high value on the natural environment. When the Strategic Plan becomes public by year-end, I hope you will examine the document and see that we are planning for the current and future needs of Broadmead/Saanich as fast paced change occurs here and across the world. To that end, Saanich Council has joined with many other cities in declaring a Climate Emergency and making decisions to enhance our sustainability and environmental health.

Both councils continue to work together on developing the Terms of Reference (TOR) for the Citizens' Assembly Process. The TOR will include directives on reporting, composition, roles and responsibilities, and the decision-making process of the Citizens' Assembly.

Only a few remaining outstanding differences have yet to be finalized. The Councils expect to be considering the final adoption of the Terms of Reference and general process before year's end for preparation of the Assembly's work getting underway in early 2020. If you are interested in participating on the Assembly, please look for a call for applications which, I expect, will be announced publically in the new year. I thank BARA for giving me this opportunity to keep Broadmead residents informed about the work of your council.



Lana Popham, M.L.A.

A message

Hello Broadmead Residents!

Thanks for the opportunity to say a few words on what's happening in our office. Short answer, lots! If you missed my Summer ENews, you can find it-and the sign-up for it-on my website. We have our Fall edition coming out soon, but I'll give you a couple quick spoilers to hold you over.

Keating X Road Overpass! At long last that section of the highway will finally catch up to the volume of traffic that it needs to safely accommodate. The left turn across oncoming lanes has long been a worry for many - and a barrier for some. The project will eliminate that left turn across highway traffic onto Keating Cross Road and realign the south-bound on-ramp. Very welcome changes!

Another exciting announcement I made this summer was the opening of the Alex and Jo Campbell Centre for Wellness and Health at Camosun College Interurban. This amazing state-of-the-art, LEED-built facility will host the learning experiences of more than 1,000 health and human services students at any given time. We're creating great local careers at the same time as we're creating care workers for our vulnerable. It's a win-win.

Thanks for reading! I hope to see you at our Holiday Open House & Art Opening on the evening of December 19. We'll be featuring the stunning work of Saanich artist Chen Yuen - and the scrumptious baking of our own Maureen Rogers!

Please join me,
Lana



Wisman & Mills

CHARTERED PROFESSIONAL ACCOUNTANTS

Murray Wiseman, B.Comm, CPA-CA, IFA, CFF

Tel: 250.744.3543
Fax: 250.744.3546
murray@wisemanmills.ca

102 - 4430 Chatterton Way
Victoria BC V8X 5J2
www.wisemanmills.ca

250-479-4154
saanichsouth.ca

LANA POPHAM
MLA Saanich South

• INNOVATIVE SOLUTIONS
• SECURITY, ROLL SHUTTERS
• AWNINGS, PATIO COVERS
• SCREENS: WINDOWS, DOORS
• OUTDOOR LIVING, INSECT-FREE

ENDLESS SUMMER
Experts at our expanded showroom. Ask about specials.
ORDER NOW! CALL 250-384-8931
Open M-F: 9-5 | wizardvictoria.com
493-B Burnside Road East, Victoria

FEATURING THE UTURN CHAIR, BY BENSEN

MADE IN VANCOUVER

Chester Fields

Chester Fields Inc.
532 Herald st. Victoria
778-432-2468
info@chester-fields.com

ARTISAN BISTRO
Café · Restaurant · Broadmead

CALL 250.590.9333 / 350-777 ROYAL OAK DRIVE / WWW.ARTISANBISTRO.CA

FAWCETT

sleep naturally

fawcettmattress.com

A BETTER MATTRESS
HANDMADE IN VICTORIA

babin DENTISTRY

A Different Approach to Dental Care

Dr. David Babin B.Sc, D.D.S.
#200 - 4460 Chatterton Way, Victoria, BC V8X 5J2
info@babindentistry.com www.babindentistry.com
ph: 250.744.4499 fx: 250.744.3755

gabrielross
ALWAYS AUTHENTIC

2500 rock bay ave. Victoria, BC
250.384.2354 * grShop.com

CARL HANSEN & SON
FURNITURE RESTORATION

ROYAL LEPAGE

Coast Capital Realty
INDEPENDENTLY OWNED AND OPERATED

MARY BROOKES
DIRECT: 250-889-2621
MaryBrookes@RoyalLepage.ca

2017
VICTORIA REAL ESTATE BOARD
MLS® GOLD AWARD

FOR ALL OF YOUR REAL ESTATE NEEDS, CALL YOUR BROADMEAD RESIDENT REALTOR!

NOBODY WILL WORK HARDER OR MORE PROFESSIONALLY ON YOUR BEHALF.

Travel Globally, Deal Locally with a Marlin Travel Specialist

Broadmead Village
250-383-5414

Broadmead Development News

Construction of New Church at Maltwood/Emily Carr/Quadra

The Seventh-Day Adventist Church-owned property at the corner of Maltwood/Emily Carr/Quadra will be the site of the construction of a new church. The proposed building and parking lot meet all zoning requirements, and construction will not require any additional approvals, or be put before council (as would be the case if a change in zoning is requested). BARA believes the parking lot will probably exit onto Emily Carr, although final traffic details need to be worked out with Saanich.

Development Proposal on Lochside Drive

BARA has learned that a new development application is in the works just outside the borders of Broadmead (across from Lochside Elementary School). As we understand it, 12 new residences, each with a suite, are to be built at 4590 Lochside Drive. The subject property is not within Broadmead so BARA has not contacted the developer. Plans have been posted on the Saanich Planning Department web page (to find out more go to <https://www.saanich.ca/EN/main/local-government/development-applications/active-development-applications/blenkinsop.html>). We will post details on our web page as we learn more. We welcome input from Broadmead residents on whether BARA should take a position when Saanich Council considers any zoning variance application.

Fun at BARA Community Day

Bonny Stedman



Our annual BARA Community Day was a great success this September, and thankfully the weather cooperated!

Thank you to all the participants who made our day extra special. This event is a great opportunity for local non-profits and surrounding businesses to connect with the community and showcase their offerings. Broadmead Pharmasave pulls out all the stops each year with an inflatable obstacle course and fun activities for the kids.

The band was The Capital City Syncopators, and they did an excellent job of keeping all of our visitors entertained. We also had great participation by the Saanich police and Fire Department. We are always thrilled when they are able to join us, even though they are on duty. The vintage police car and the cruiser are always a big hit.

This event would not be possible without the great support and sponsorship of Grovesnor Canada Limited, Thrifty Foods, Romeo's, and Pharmasave. The support we receive from them is always appreciated. On a personal side, Community Day is a wonderful opportunity for BARA to connect with our residents. Many of our members use the opportunity to renew their membership and every year we get to chat with newcomers to our area.

*Happy Holidays to our Broadmead Residents
and wishing you all a happy, healthy, new year!*

MEMBERSHIP APPLICATION/RENEWAL FORM

Mail your completed form and a cheque for your membership dues to the following address:

Broadmead Area Residents' Association
Box 53527, Broadmead RPO
Victoria, BC V8X 5K2

(if you wish to pay by PayPal, visit our website: <http://www.broadmead.ca/members/membership/membership-renewal/>)

MEMBERSHIP IS RESTRICTED TO RESIDENTS OF THE BROADMEAD AREA

NAME:

One other person residing in your home may be included in your membership (insert name): _____

ADDRESS:

EMAIL:

PHONE:

| NEW MEMBERSHIP | RENEWAL |
|---|---|
| <input type="checkbox"/> One Year (\$15) | <input type="checkbox"/> One Year (\$15) |
| <input type="checkbox"/> Two Years (\$30) | <input type="checkbox"/> Two Years (\$30) |
| <input type="checkbox"/> Three Years (\$45) | <input type="checkbox"/> Three Years (\$45) |

CHECK THE BOX IF YOU WOULD LIKE TO BECOME A VOLUNTEER:

☐