

# Broadmead

**Community Association Newsletter**



**New Lochside School Driveway:  
*School Board vs Cyclists***

**Lochside Trail Connector at Quailwood Place**

**Food Bank in Broadmead**

**Fall/Winter 2022/23**



**ROYAL LEPAGE**

**Coast Capital Realty**

INDEPENDENTLY OWNED AND OPERATED

**FOR ALL OF YOUR REAL  
ESTATE NEEDS, CALL YOUR  
BROADMEAD RESIDENT  
REALTOR!**

**LICENSED SINCE 1989**



**MARY BROOKES**  
**DIRECT: 250-889-2621**

*Personal Real Estate Corporation*

**MaryBrookes@RoyalLepage.ca**



INSIGHT VACATIONS

marlin★travel™

**GLORIOUS GREECE**

*with Voula and Eric Christou*

13 DAYS / 12 NIGHTS | SEPTEMBER 16 - 28, 2023 | PRICE: \$6139 CAD\*

*See Stunning Santorini and Experience the  
Ancient Grandeur of Greece*

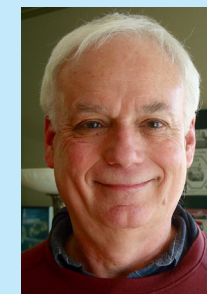
Insight Vacations brings to life the art of traveling in style while providing all the sights and insights up close and personal in comfort and in style.

**For more information or to book, please contact Voula and Eric Christou at 778.676.9241**

\*Terms and conditions apply.

## President's Message

Doug Baer



This fall marked the return of "in person" BARA activities after a hiatus of over two years. During the pandemic, we conducted two all candidates' meetings – one for the provincial election and one for the federal election – electronically (via Zoom) and posted the videos on our web page, we had to suspend our regular fall Community Day event, and we held our Annual General Meetings electronically. This fall, all of that changed.

Our Annual General Meeting was held at Gateway Baptist Church in September. We expect to return to the pre-pandemic scheduling of our AGM, which means that we will be holding our 2023 AGM in April and not in the fall. It is likely that the next issue of the Bugle will not hit the streets in time for an announcement of this meeting, so if you are interested in attending, please watch our webpage ([www.broadmead.ca](http://www.broadmead.ca)). Of course, paid-up current members of BARA will get an email notice (if we have your correct email address on file).

In early October, we joined with 3 other nearby community associations to put on an All Candidates' Meeting for the municipal election. The Cordova Bay Association for Community Affairs, the Blenkinsop Valley Community Association and the Falaise Community Association shared with us the financial costs and the organization burden of putting this event on. There were so many candidates that we had to dispense with the usual table-and-chair arrangement at Claremont Secondary School, where the event was held, and simply array candidates (23 of them) in a big "U" at the front of the stage. Approximately 240 people (not counting candidates and volunteers) attended. I hope that those who attended found the event informative. We did our best to get in as many questions as we could, only allowing candidates 25 seconds apiece to answer each question. We managed to present 6 questions to all candidates and another 5 to the mayoral candidates. Other similar events typically allowed candidates longer to answer but then there was not enough time for more than 3 or 4 questions. I sometimes wonder if the at-large voting system for municipal elections best serves local democracy; it most certainly makes for headaches for all-candidates' meeting organizers.

Our Community Day event took place in September and received sponsorship assistance from a number of Broadmead area businesses (we have included a separate thank-you in this issue of the Bugle). I especially want to thank Barb English, our volunteer who organized the event for the tremendous amount of energy and effort she put into making this year's event, in my opinion, the most successful ever.

BARA's Board meets monthly. We continue to meet electronically, given that we do yet not consider it safe (for lodge residents) for us to ask the Broadmead Lodge to resume using its board room as we had done for at least a decade in the past.

BARA remains in need of volunteers to help support the efforts of the organization. Whether it involves joining our Board or helping us with one of more of our regular activities (including delivering the Bugle), please consider joining us – if you are interested, you can contact me at [PresidentBARA@gmail.com](mailto:PresidentBARA@gmail.com).

To the best of my knowledge, this is the first time the Bugle has come out during the holiday season (usually, we manage to print it earlier in the fall). This gives me the opportunity to wish all of our readers the very best for the holiday season.

## In This Issue

BARA is still looking for a regular Editor for the Bugle. This issue was produced by an interim editorial committee consisting of Doug Baer, Nancy Craig and Nathan Nankivell (all Board members) and Bruce More, who handles all of the layout work.

In this issue of the BARA Newsletter, Bruce More writes about the food outreach program at Gateway Baptist Church. Bruce himself has been active for over 20 years working with Rev. Al Tysick and the people at Our Place, so he is the perfect person to write about this food bank operation.

We regularly invite Saanich politicians Susan Brice (who lives in Broadmead) to write columns for us. We also invited new (newly elected) councilors (including the mayor) to write on issues they see as important in Saanich. We thank Susan, Dean Murdock, and Teale Phelps Bondaroff for their submissions.

This issue includes articles about two developments near the Lochside Trail and Lochside School: a proposed new driveway the school board wants to construct along the Lochside Trail, and a proposed path Saanich Parks wants to put in place between Lochside Drive and Quailwood Place. Not all residents feel that these are good ideas. We try to explain what is happening and outline the pros and cons of each of these.

We thank the many advertisers who, by advertising in the Bugle, help to support the publication and the local community.





## A Foodbank in Broadmead

Bruce More

When we moved here in 1998, food insecurity was hardly “a thing” in Broadmead. That has changed now since current inflation and rising food prices have been creating havoc with personal lives in Canada, I was interested in hearing about a food bank available in Broadmead. On Nov. 3, I visited Gateway Church to find out about their food outreach.



I met Gregg Cochrane, Associate Pastor of Community Life at the church. Gregg is in charge of the food bank at Gateway (known as the Neighbourhood Market), which provides food security for those in need in Saanich and surrounding areas.

The market is open from 4 to 5:30 on Tuesdays in the downstairs hall and offers a large variety of food, from non-perishable things to produce to frozen and dairy items (the market has a large freezer/cooler available). Some non-food staples are offered also when available.

Donations from the public can be dropped off (non-perishable only) during office hours (Mon-Thurs 9am-2pm) or Sunday mornings (9 or 11am). Financial donations are also welcome.

This service, a ministry of Gateway Church congregation, has been offered for the last five years. There are 30 to 40 local volunteers who accompany each recipient, gathering the choices to minimize handling.

The Neighbourhood Market operates in partnership with Living Edge, a Victoria NGO which also supplies 6 other food banks on other days of the week



**Monday**  
**2:30-3:45pm**  
UVic Family Circle,  
2375 Lam Circle

**5pm**  
Central Baptist Church,  
833 Pandora Ave  
Victoria

**Tuesday**  
**4:30-6pm**  
Gateway Church,  
898 Royal Oak Ave.,  
Victoria

**Thursday**  
**11am-12pm**  
Quadra Village  
Community Centre, 901  
Kings Rd., Victoria

**5:30-6:30pm**  
Saanich Baptist Church,  
7577 Wallace Dr.,  
Victoria

**Friday**  
**12pm – 1pm**  
Open Gate Church,  
679 Goldstream Ave.,  
Langford

**Saturday**  
**11am – 12pm**  
Harbourview Church,  
511 Constance Ave.,  
Esquimalt



## From Saanich Police

### BE SCAMMER SAVVY - BEAT THE FRAUDSTER

Scammers are criminals who can devastate our personal and financial security with a phone call, email, text, or pop up ad. Their MO is trickery and they are professionals at it. But they don't have to win.

### COMMON TYPES OF FRAUD AND HOW TO PREVENT THEM

There are many types of fraud, with new ones invented regularly. Remaining cautious and aware is your best defense. It's helpful to know that fraudsters use three powerful and effective things to get you to cooperate:

**The hope of a benefit:** “You’ve won a prize!” “This is a guaranteed investment!” “I love you!”

**Fear:** “You owe taxes.” “You will be arrested.” “Your loved one is in trouble.”

**Your natural willingness to help:** “Help us catch these crooked bank employees.” “Be our secret shopper.”

These are designed to manipulate your emotions, prevent you from thinking rationally, and make you take actions you normally would not. Help us help you prevent fraud.

These simple tips can help protect us:

- **Breathe and Slow Things Down**
  - o Scammers pressure you with fast talk, threats, and big words.
  - o They want you to act without thinking.
  - o If it's too good to be true it probably a scam!
- **Ask Yourself “Does this make sense?” Do your own research!**
  - o Can I win a lottery I never entered?
  - o Why is Microsoft calling me about my MacBook security?
  - o Would police/the bank/CRA really ask me to put all my money in a bitcoin machine? – No they wouldn't!
- **Check in with two trusted other people ie. your bank, your family**
  - o Tell them the “story” and ask their opinion
- **Be rude – hang up, delete, don't respond.**
- **Take all the time you need.**

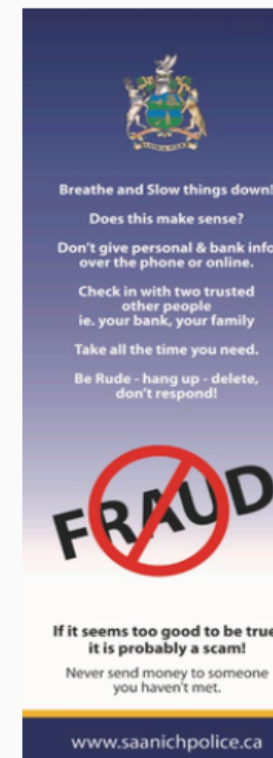
If you do become the victim of a scam, you should:

- Report any financial loss to your bank immediately so that your accounts can be secured;
- Report any identity theft to both credit bureaus, Equifax and TransUnion; and
- Report to the Canadian Anti-Fraud Centre and your local police

For more information on fraud prevention, check out the following resource list on the Saanich Police Department Website.

### [Financial Crimes – Saanich Police Department](#)

The Saanich Police Financial Crimes Section is always available to present to your group, organization or business. If you are interested in a fraud prevention presentation, tailored to your specific needs, please email D/Cst. Berle Zwaan at [bzwaan@saanichpolice.ca](mailto:bzwaan@saanichpolice.ca)



### WHAT TO DO IF YOU ARE A VICTIM?

- Contact your **local Police Department** to report the incident
- Contact your **financial institution** if you sent \$ or provided your account information
- Contact **Equifax** and **TransUnion** to place a Fraud Alert on your credit report.
- Report to the **Canadian Anti-Fraud Centre** (CAFC)

### CONTACT

Saanich Police  
250-475-4321

Canadian Anti-Fraud Centre  
1-888-495-8501

Equifax  
1-800-465-7166

TransUnion  
1-800-663-9980



[www.saanichpolice.ca](http://www.saanichpolice.ca)



A Lochside Trail Connector at Quailwood Place

There are relatively few connections from Broadmead onto the Lochside Trail south of Royal Oak Drive. Saanich Parks has been pushing to extend the trail network to add one such connection, which would connect Quailwood Place with the trail. As part of the development approval process for the nearby 4590 Lochside Drive development, the developer is being asked to ensure that the development is compatible with the construction of such a trail (e.g., with fencing, etc.) and to provide a community amenity contribution to fund the cost of constructing the trail.

On the surface, this trail appears to be a welcome addition to the Broadmead trail network. For Quailwood Place residents, it would provide easier access to the trail and a shortcut for elementary school children to walk to school (1 block versus 2-3 blocks). For residents on Rithetwood or beyond, it probably would not shorten the walking distance to the school against the current pathway along Royal Oak, but it would provide an alternative route. It expands the overall Broadmead trail network, which is one of the strong, positive features of the community. Cyclists could avoid having to cycle along Royal Oak, though bicycle use of Broadmead walking paths has always been controversial (years ago, there was a hue and cry over cyclists on the Rolston Trail) and it is not clear this path would be suitable for a cycling shortcut.

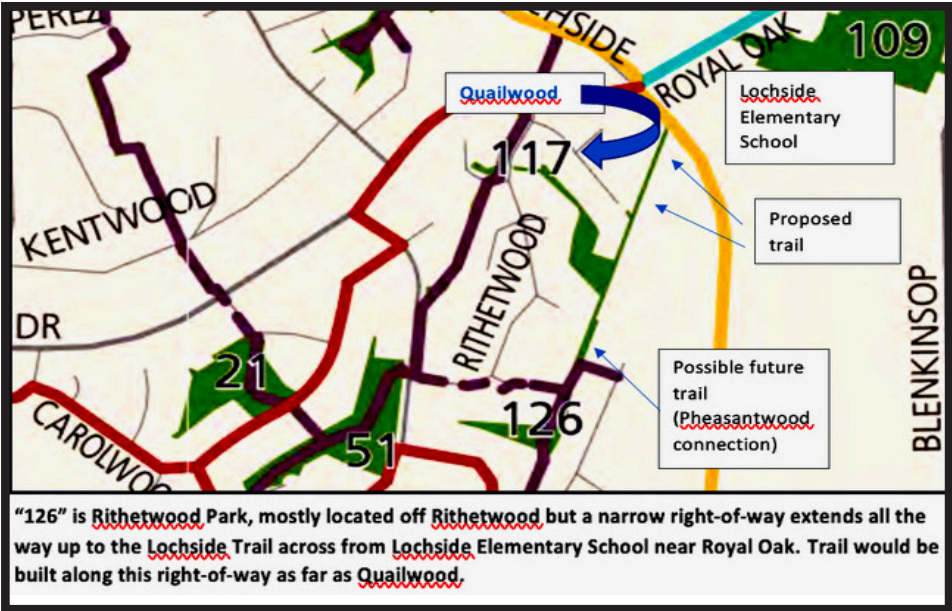
The proposed trail would probably be more valuable if it were extended all the way south through Rithetwood Park to connect with Pheasantwood Terrace. For residents on this street and Donwood with children going to Lochside School, such a path would represent a substantial reduction in walking distance to the school, at least at times of the year when weather does not interfere with trail use. Such an extension is not in the current plans, although it seems to be suggested as a future possibility.

We do not know for certain how much or how little consultation took place over this trail, though in all likelihood it was fairly minimal. In email correspondence now publicly disclosed, the developer indicates that it is willing to construct or finance the trail, but asks, if there has been any "consultation with adjacent neighbours regarding the path location. Have they agreed or indicated they have no objection to the path?" The

only response we have been able to locate is contained in an email indicating "Saanich has a long history of building connectivity into the community as part of the development approvals process...[to] buil(d) an extensive network of trails and paths throughout the community and especially in Broadmead".

BARA has received emails from residents on Quailwood who have asked it to take a stand and publicly oppose the trail. Residents claim, "residents who live on these streets have not been consulted by Saanich or the developer on the impacts to them resulting from the construction of the connector route." In one email we received, we were told that, in an informal canvassing of 22 neighbours, 15 said "no", 2 were "not opposed" and 5 could not be contacted. The residents' concerns can be summarized as follows: a) people will park on Quailwood to drop their children off, creating congestion on that street where this is not currently a problem, b) nighttime use of the trail will lead to security concerns for nearby property owners, c) property owners will be subjected to "noise and nuisance from non-residents" for "cycling, walking, dog walking and blue box skimming".

BARA welcomes comments from Broadmead residents on the proposed Quailwood trail connector (email: info@broadmead.ca).



artisan dental  
broadmead village

Dr. Chélise Kasun Inc. B.Sc., DMD

250-479-8100  
510-777 Royal Oak Dr.  
info@artisandentalvictoria.com

www.artisandentalvictoria.com

Hi, I'm Mark. **Broadmead resident**, husband, dad, and real estate agent with an exciting new brokerage called **The Agency**.

MARK NELSON  
250-661-0175  
www.marknelson.realtor

fine art prints

from the artist's Broadmead studio

order online  
fineartprintoriginals.com  
delivered to your door

ORIGINALS

SO...  
IS IT TIME  
FOR YOU TO SELL?

Take advantage of our Free Market Evaluation Service and let's figure out if the time is right for you.

Let's Talk.  
250.744.5551 OFFICE  
team@mcleanrealestategroup.ca

Not intended to solicit properties currently listed for sale

RE/MAX CAMOSUN  
**McLean**  
REAL ESTATE GROUP  
PERSONAL REAL ESTATE CORPORATION  
250.744.5551

Experience Matters!

Book a Consultation with Us!

EVA CASTELSKY REALTOR  
DARREN NEUHAUS REALTOR  
GEOFF MCLEAN PERSONAL REAL ESTATE CORPORATION  
COURTNEY FIALA REALTOR  
JODI BAKER REALTOR



## The New Lochside School Dropoff/Pickup Driveway:

### The School Board Versus Lochside Cyclists? - Douglas Baer

The Lochside Elementary School, located at the intersection of Royal Oak Drive and Lochside Drive (the Lochside trail) serves Broadmead, most of the nearby Sunnymede area, much of the Blenkinsop Valley and an area on the west side of the Pat Bay Highway between Royal Oak and a line slightly south of Quadra. At its extreme edges, the catchment area involves a walking distance of over 3km. to get to the school. The longest walking distance from any Broadmead residence is about 2.5km using off-road pathway shortcuts that might not be suitable year-round or about 3.7km using a motor vehicle.

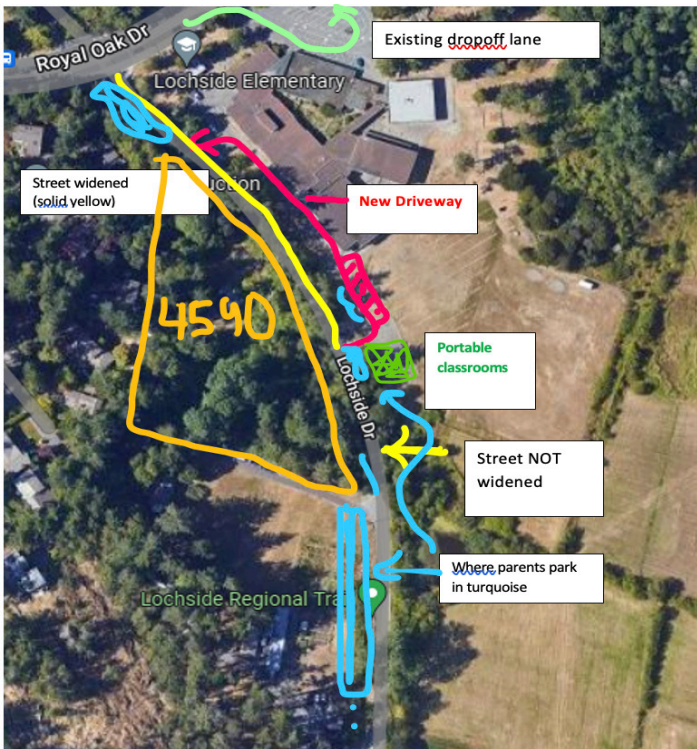
In front of the school, off Royal Oak Drive, is a drop-off driveway where parents can pick up or drop off students. While this driveway takes drivers through a parking lot, the parking lot itself is reserved for staff. There is no substantial provision for non-staff parking on school property, except perhaps for an 8-car gravel parking area beside a fire lane sometimes partly occupied by staff vehicles.

To the immediate east of school property, Lochside Drive forms part of the Saanich portion of the Lochside Trail. Bicycle use along this trail seems to be increasing, according to crdbikecounts.ca, with a peak hourly count of 151-200 in May of 2022, up from 101-150 in 2018.

North of Royal Oak, Lochside Drive is “full width” associated with street design criteria for arterial roads. Although bicycle users would undoubtedly prefer a bollard or concrete curb separated bike lane, the width of the street at least minimizes serious bicycle/motor vehicle conflict. South of Royal Oak, along the school, the street is exceedingly narrow, consisting of a single lane with inadequate room for two-way traffic, implying serious contention whenever motor vehicles and bicycles attempt to use the street/trail at the same time. This will change a bit when a 6-house development is constructed west of Lochside south of Royal Oak. As part of this development, Lochside will be widened to 6 meters (but not to the full “standard” 8-8.5m in part to preserve trees) along much of the school property. The development itself will add a modest traffic load to the street (counter-balanced by the widening). The portion of the trail where it still is part of Lochside Drive south of the development (north of where it is no longer a municipal street and becomes a CRD-managed no-motor-vehicles-allowed trail) will remain at the current “barely one lane” width. At the south end, where a couple of residences and a farm business exist, the road widens enough to allow for parking on the side. Along this stretch, as few as a dozen and as many as 25 vehicles are parked by parents in the early morning and mid afternoon, creating congestion and conflict with cyclist use, especially along the very narrow portion of the street immediately to the north.

#### What the School Board Plans

The school board plans to build a second pickup and drop off driveway along the side of the Lochside school, parallel to Lochside Drive. Cars will drive down Lochside Drive, enter the driveway near where portable classrooms are located, then drive north along the driveway, exiting on Lochside not far from the intersection with Royal Oak. The school board will retain the existing dropoff/pickup facility along



Royal Oak Drive. Along the side of this new driveway there will be 9 new parking spaces. But in order to build the driveway, the 8 existing gravel-lot spaces will be eliminated, along with 3 spaces currently at the north end of what will be the driveway and an under-used sandbox and picnic table area. So there will, if anything, be a very slight net loss of parking spaces. It is possible that some or all of the existing 3 gravel spaces near the fire entrance immediately off Lochside Drive close to the portable classrooms may be eliminated as well.

#### A Brief History

In 2019, as part of a proposed development to the east of Lochside, Limona Construction offered to pay for the construction of the driveway in exchange for a letter from the school board indicating that it (the school board) had no objections to the new development. The Broadmead Area Residents’ Association was, at the time, opposed to the development, citing as one of its reasons for the objection the harm that would be done to the Lochside Trail. BARA withdrew its opposition when the developer amended plans to, among other things, reduce the number of driveways directly entering Lochside Drive and to change the configuration of the development to make it more consistent with the neighbourhood. At the same time, at BARA’s urging, the developer withdrew its offer to support (pay for the costs of) the school driveway. Nonetheless, the school board continues to plan to build the driveway, albeit now at its (i.e., taxpayer) expense.

#### Parents Parking Cars Along Lochside

Both in 2020, when BARA first heard about the driveway proposal, and this year, we talked to parents parking their cars along Lochside Drive to the south of Royal Oak. We learned that teachers in kindergarten and grade 1 classes will not release students at the end of the day without the parents being present, which in part explains the reason why parents (especially those living more than 1km

away from the school and perhaps less able to walk or cycle the distance) feel they must park their cars to pick up their children. The need or preference to park cars generally seems to end after children reach grades 2 or 3. The vast majority of those with whom we talked told us that the driveway would be of no assistance to them, though across the over two dozen people we talked with, two felt that the driveway would be helpful and might lead them to not need to park their car. Overwhelmingly, what parents told us is that they needed a place to park their cars at the beginning and, especially, at the end of the school day.

We have not been able to talk with many parents using the existing dropoff/pickup driveway off of Royal Oak, but those we talked with told us that the driveway worked well. We have not observed lineups of cars on Royal Oak Drive itself which would suggest that there is a capacity/congestion issue. It is, of course, possible that some parents currently parking their car do so because they find the Royal Oak driveway inconvenient and not because they feel they actually need to park their car. In the future, densification in the Cordova Bay area might lead to higher traffic volumes along Royal Oak. The existing laneway requires drivers exiting to drive westbound along Royal Oak to wait for traffic, whereas the new driveway would allow them to make this turn with the assistance of a traffic light.

#### Cyclist Conflict

From what we have observed, it would appear that the new driveway will not substantially reduce the number of cars parked along the narrow single-lane stretch of Lochside Drive where vehicular traffic conflicts with cyclist and pedestrian use of the trail. Parents will still feel the need to park cars far down the trail. In this sense it does not fix the main problem (the need for parking). Since there is already a dropoff driveway off of Royal Oak, arguably it is a solution in search of a problem. If the pickup and dropoff traffic is split evenly between the existing laneway and the new driveway, it will be the case that substantial additional traffic will be drawn down Lochside Drive south of Royal

Oak and increased conflict with cyclists will occur. This portion of Lochside Drive will, as mentioned above, be widened from single-lane to two narrow lanes (6m.) but will not be wide enough for a bike lane. A new sidewalk will be constructed along this length of Lochside Drive, so pedestrian trail users would not be negatively affected by additional motor vehicle conflict.

The new driveway will also greatly increase vehicle/cycle and vehicle/pedestrian conflicts at the Royal Oak/Lochside Drive traffic light, especially in the absence of special left turn cycles and/or “no right turn on red” prohibitions.

#### Saanich and the CRD

The CRD has “signed off” of all matters pertaining to changes at this location because, as a municipal street, Lochside Drive is under Saanich and not regional jurisdiction. One might think that the CRD would take a bigger interest in preserving the integrity of its regional trail system, but this not presently the case. Saanich Planning takes the view that this matter is of no concern to it and solely a matter to be determined by Saanich Engineering. Saanich Engineering takes the view that once the section of Lochside Drive along which the driveway will run is widened to 6 m., its design criteria have been met and it has no objection to the new driveway construction. Saanich Engineering also takes the view that the CRD has no role to play in this matter (e.g., providing input or outlining concerns with respect to the Lochside trail system).

#### Should BARA oppose the driveway?

While it is not clear that anything could be done to stop driveway or change the planning (for example, adding parking at the back of the school so parents do not need to drive down the trail to park cars), BARA would like input from community members on whether it should work to oppose this project. Some community members might, to be sure, consider the driveway to be a good thing despite its negative impact on cyclists. Others might wish us to push the school board for more on-site parking. To provide comments, email us at [info@broadmead.ca](mailto:info@broadmead.ca)





**Bara  
Community Day**

**Thanks to our Sponsors**

BARA would like to thank the following businesses for their generous sponsorship donations which helped us to put on the Community Day event on September 18, 2022:

- Royal LePage Coast Capital Realty  
(Mary Brookes, Realtor)
- Grosvenor Canada (Broadmead Village)  
/ SDM Realty Advisors Ltd.
- Coast Capital Savings
- Pharmasave Broadmead  
Maximus Enterprises Ltd.

We also thank the following businesses for contributing prizes (merchandise or gift cards) for the gift baskets that were awarded to raffle winners:

- artSEE
- Canadian Tire
- Heirloom Linens
- Niche Grocerant
- Penna & Co Kitchen & Giftware
- Pharmasave Broadmed
- Running Room (Broadmead)
- TLC Fibre Arts
- Tula Massage & Yoga

And we want to thank the following businesses for providing food for the event:

- Thrifty Foods Broadmead
- Romeo's Broadmead
- Niche Grocerant/49 Below Ice Cream
- Starbucks (Broadmead)



**Vision...  
Well Framed**

Eyewear for the whole family.



Broadmead 250.881.8252  
Oak Bay 250.595.2773  
[www.artSEEeyewear.ca](http://www.artSEEeyewear.ca)

artSEE  
EYEWEAR

**Robyn  
Wildman**

Top rated in Customer Service  
Multiple MLS® Award Winner

**Why work with Robyn?**

"Robyn was very professional & efficient to deal with the sale of my home & purchase of my new one. She provided professional knowledge of the location I was selling in & got top dollar for my home. Robyn is very approachable & has great communication skills. She works hard for your business right from the first meeting."

-T.



**BUYING OR SELLING  
REAL ESTATE CALL**

250.818.8522  
[rwildman@sothebysrealty.ca](mailto:rwildman@sothebysrealty.ca)  
[robynwildman.com](http://robynwildman.com)

**Sotheby's**  
INTERNATIONAL REALTY

Canada  
[sothebysrealty.ca](http://sothebysrealty.ca)

Sotheby's International Realty Canada, Independently Owned and Operated.



**Teale Phelps Bondaroff**  
Newly elected Saanich Councilor

As one of your newly elected Saanich Councilors, I wanted to take a moment to introduce myself and talk about a few of the issues I'm looking forward to tackling this term.



I live down near Rutledge Park, and in addition to serving Saanich, I work as the Director of Research for Oceans Asia, a marine conservation organization dedicated to protecting our oceans and combatting wildlife crime.

You may have also seen some of my placemaking work with the Greater Victoria Placemaking Network. For the past five years I have volunteered as the lead of the Pocket Places Project, which helps map, promote, build, and stocks little free libraries across the region. This project has mapped over 650 of the little book boxes in the CRD, built over 100, and distributed more than 80,000 books.

I am excited about our new Council, and I am looking forward to working with my colleagues to address a number of issues facing the district. Housing is at the top of many people's minds these days and it is important that we work hard to make affordable housing a reality for everyone.

There are a number of different policies we need to work on, including streamlining our approvals process, reviewing our garden and secondary suite policies, protecting renters, and ensuring that multi-unit projects include affordable units in a range of sizes to ensure that families have access to affordable housing. It is also critical that we work with senior levels of government to support local non-profit organizations in securing funding for below-market and supportive housing, and I would love to see more co-ops in the District.

Road safety is very important to me, and I will be working hard to ensure that our streets are safe and accessible. I am a big fan of innovative traffic calming measures, and would like Saanich to explore these, alongside conventional measures, reduced speed limits, and more connected active transportation infrastructure.

I am passionate about protecting our environment and community-building. Our beautiful parks are the number one thing people tell me that they love about Saanich, and I want to ensure that our greenspaces are protected and thriving. One of the lessons I drew from the pandemic

**BARA needs volunteers!**

We are looking for volunteers in the following areas:

- Individuals willing to serve on our Board (contact PresidentBARA@gmail.com for details; the next Board elections will be in April 2023)
- Individuals interested in helping to publish this publication (the Bugle): writing, editorial, photography, and people to help deliver the Bugle to houses (twice a year)
- Help with community events (including Fall Community Day)

**A New Deal for Doctors**

Lana Popham Provincial Affairs M.L.A., Saanich South

Every day I hear from people in our community that access to quality health care is their number one priority. Not having access to a family doctor or other primary care provider can have long-term health implications, and long wait times to see a doctor at a clinic are deeply frustrating.



We are listening to these concerns, and we are taking action.

One thing has been clear: the current fee-for service payment model hasn't been working for everyone.

That is why I am proud to share with you that, in February, a new opt-in model for family doctors will take effect. Our government and the Doctors of BC have developed a new payment model that provides doctors with the support they need to care for patients.

This new model will raise the average wage for a family doctor in BC and ensure doctors can give patients the care and time they deserve. Rather than paying doctors based only on the number of patients seen each day, the new model will also account for the time spent with each patient, the complexity of patients' concerns, and the administrative costs of running a family practice.

The new payment model marks the start of a new approach to supporting doctors – we're doing things differently so that doctors can deliver more and better care to people who need it. Under the new payment model, the Province will be better able to attract new family doctors to family practice, and retain existing doctors.

We've also reached a tentative Physician Master Agreement, which includes several more actions that will better support doctors as they care for their patients.

We are working to train and license more doctors to work in BC by:

- Expanding medical training for doctors
- Adding new residency seats, including dedicated seats for international medical graduates
- Working to make it easier for foreign trained doctors to work in BC
- Supporting safer workplaces for health care workers with 320 new protection service officers
- Doubling the number of nurse practitioners to free up doctors to see more patients
- Opening new urgent and primary care centres – 29 with more to come

We know there is more to be done, but our new deal for doctors is an important step forward in building a better health care system here in BC.

**Pulling Together**

Katie Turner and Lawrence Statland

A defining characteristic of the Broadmead neighbourhood is the retained natural areas which are part of the original development plan. Broadmead is home to 17 parks, linear trails, and traffic islands which comprise more than 20% of the total land base (over 60 hectares). One way we can work together to keep this greenspace healthy and beautiful is by volunteering through Saanich's Pulling Together program.

Pulling Together volunteers work on rocky outcrops, wetlands, forests, and wildflower meadows. Together they remove invasive species, plant native vegetation, improve wildlife habitat, monitor progress, and educate others. Lead Steward volunteers are the backbone of the Pulling Together volunteer program. They collaborate with Saanich Parks and coordinate the boots on the ground that put community stewardship into action. Some Lead Stewards work independently while others organize regular volunteer work parties and support enthusiastic youth, faith, corporate, and other organized groups.

Without committed Pulling Together volunteers, natural areas can be vulnerable to invasive species and habitat degradation from overuse. These amazing environmental stewards are helping to build a community of care whose actions protect and restore natural habitats for future generations. Volunteering is a great way to learn, make a difference and have fun! To learn more, see Saanich's Events Calendar to find work parties and Pulling Together groups that are looking for more helpful hands. In the Broadmead Area there are Pulling Together projects in the following parks. Please contact parks@saanich.ca to learn more.



**Boulderwood Park**

**Chatterton Hill Park**

**Emily Carr Park**

**Lohbrunner Park**

**Rithet's Bog Conservation Area**

**Shadywood Park**





# Time to Move?

Visit [MoveWithNancy.ca](https://MoveWithNancy.ca)  
Get a Free Market Report & Evaluation

- 19+ Years Experience
- Ask about my Seller & Buyer Packages with different options that can best suit you
- Marketing Your Home For All It's Worth



JOHN VERNON  
PERSONAL REAL ESTATE CORPORATION  
& ASSOCIATES  
WEST COAST INSPIRED




THE  
RE/MAX  
COLLECTION®

## NANCY BALL

YOUR HOME STAGING REALTOR®

250-880-8818 | [NancyBallRealtor@gmail.com](mailto:NancyBallRealtor@gmail.com)





**Wiseman & Mills**  
CHARTERED PROFESSIONAL ACCOUNTANTS

Murray Wiseman, B.Comm, CPA•CA, IFA, CFF

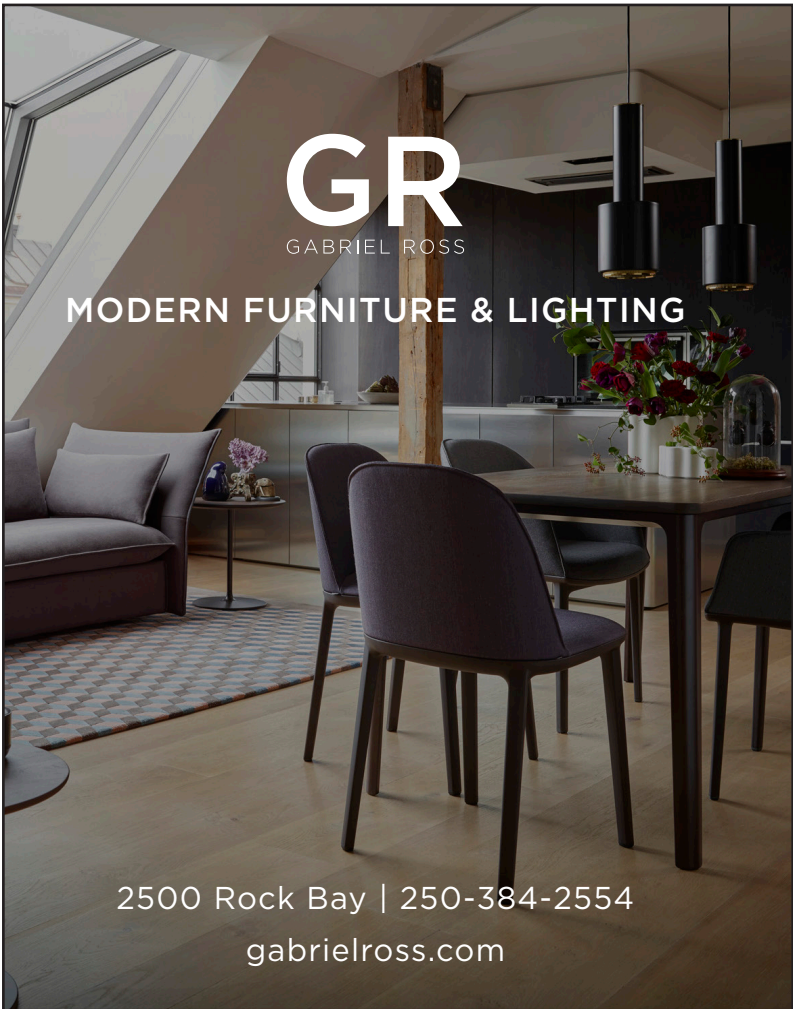
Tel: 250.744.3543  
Fax: 250.744.3546  
murray@wisemanmills.ca

102 - 4430 Chatterton Way  
Victoria BC V8X 5J2  
www.wisemanmills.ca



**ARTISAN BISTRO**  
Café • Restaurant • Broadmead

CALL 250.590.9333 / 350-777 ROYAL OAK DRIVE / WWW.ARTISANBISTRO.CA




**GR**  
GABRIEL ROSS

**MODERN FURNITURE & LIGHTING**

2500 Rock Bay | 250-384-2554  
gabrielross.com

**FAWCETT**  
sleep naturally  
fawcettmattress.com



**A BETTER MATTRESS**  
HANDMADE IN VICTORIA

**Eye Exams for the Whole Family**  
Dr. Sarah Buckley  
Dr. Meghan Hildebrand  
777 Royal Oak Drive - Inside ArtSee Eyewear  
Call **250.590.1859**  
to book an appointment



**Optimed Optometry Clinic**  
\*Optimed Clinic Inc.




“Proud to represent you  
as a BARA director,  
local Realtor and neighbour.”

**Jennifer Cheng**  
Sales Associate, REALTOR®  
**Direct: 250-588-8322**  
jennifercheng.remax.ca

**RE/MAX CAMOSUN**  
remaxcamosun.com  
4440 Chatterton Way, Victoria, BC V8X 5J2  
Each office independently owned and operated.

**Susan Brice**  
Saanich Councillor



It is with much appreciation that I write to you as your re-elected Saanich Councillor. As previously I look forward to serving the residents of Saanich and will communicate to the members of BARA through this newsletter when invited to do so.

The fall election identified a number of key issues of importance to residents including but not limited to affordable housing, climate change and safe streets. This issue of traffic and safe streets is an area that has been raised several times by BARA over the past few years. Saanich Council had previously committed to lowering the default speed limit and has engaged with surrounding municipalities and the Province to establish a well reasoned plan that makes sense and deals with the increased traffic volumes and their impact on road safety.

As to climate change, everyone of us is becoming more aware both globally and in our own community of the increased intensity of weather events. While Saanich and all levels of government seek to reduce GHG emissions there are things we can do in our own lives to prepare for a more sustainable future. We heard a lot about this in the last election and I am confident that the current council will build on the previous good work and continue to address the issue. We know that this will require sacrifices from residents and I pledge to make decisions on behave of our area that will advance the regions targets on this critical issue to ensure all our families can look forward to healthy green future.

There are issues on the horizon for your council including the Citizens Assembly, to examine a possible amalgamation with Victoria. Some Broadmead residents may desire to take part in such a study. Saanich will be advertising for interested participants so watch for announcements in the media.

Let me take this opportunity to thank all those Broadmead residents who through work with BARA or the community generally donate their time and energy to making this such a desirable place to live.

Warmest wishes to all for a healthy and peaceful 2023.

**Dean Murdoch,**  
Newly elected Mayor of Saanich

As your new Council comes together, we do so with a focus on the priorities that you have made clear to each of us during the election. Priorities that will guide Saanich over the course of this term. Priorities that will not swell to a number that is unrealistic. They are focused priorities that create a stronger future for everyone in Saanich.



Together, we are facing a variety of challenges, and with them, a corresponding number of opportunities. We will be successful in tackling them if we face them united as a community.

Our job is clear; we are here to serve you. Your mayor and council have got your back on the things that matter to you and your family.

We will build affordable homes. By working with the non-profit housing sector to access senior government funding, we can create non-market rental homes that are geared to income. Everyone should be able to afford to call Saanich home.

We will make our streets safe for everyone to get around. Fatalities and serious injuries are not something we will continue to accept. Development of a Road Safety Action Plan is currently underway and its adoption will be a priority for your new Council. This plan will be our guide to creating safer infrastructure to ensure Saanich roads are safe for all road users.

We will protect against the changing climate. During the campaign, you heard my commitment to plant 100,000 trees by 2032. That’s 10,000 trees a year on public lands, boulevards and private properties. Trees will help absorb stormwater during intense rain events and enrich the air with oxygen and absorb pollution.

We will build a stronger local economy. This term, we will update our neighbourhood zones to make it easier for local businesses to set up shop in our neighbourhoods. Places to meet our friends, families and neighbours. Local businesses that create local jobs in our neighbourhoods.

We will be transparent and accountable. We will promote greater transparency by publishing a Council Voting Dashboard that tracks council decisions. We will create a Lobbyist Registry to be transparent about who your representatives are meeting with, and we will implement an Ethics Commissioner to advise your Mayor and Council on good governance.

We are committed to working together with W̱SÁNEĆ Leadership Council to implement the ÁTOL,NEUEL, a Memorandum of Understanding between the District of Saanich and the W̱SÁNEĆ Leadership Council. We are also committed to and look forward to further development of relationships with the Songhees and Esquimalt First Nations.

I am humbled and honoured by the opportunity to serve you. Being the Mayor of Saanich is a truly awesome responsibility and one that I take very seriously. I know this new council and I will do our very best to honour the trust you have placed in us. Our shared future success depends on these imperatives, and we will need your support on this shared journey.

We are excited to get started.



## Welcome Hengshen Liu New Board Member



I came to Canada as an international student more than a decade ago to study Fine Arts and Political Science. After graduation, I worked in education and tourism before getting my Canadian citizenship and settling in Victoria. My wife and I have lived in Broadmead for seven years. We have always enjoyed the trees, the hills, and the bike trails, and we are glad that everything, including community events, is returning to normal after the pandemic. Community-building can be challenging, but it is worth the effort because it brings people a stronger sense of belonging to the land they live on. My wife and I have been members of BARA since 2018, and I am happy to be part of the BARA Board and volunteer my time for the community. Outside work, I enjoy photography, hiking, and writing about politics. We have two dogs, Abu, the Golden Doodle and Karma, the Doberman.

## Our Newsletter Needs Your Help!

This publication is put together by volunteers twice a year. For the past few issues, we have operated without a volunteer acting as editor; instead, an interim team of Board members has stepped in to temporarily take on this task while we await more help from volunteers. An editor would come up with ideas for new articles in conjunction with an editorial team/committee, proof-read articles and co-ordinate publication activities.

In addition to an editor, we are looking for people willing to come up with ideas for articles and, hopefully, follow through by acting as writers for those ideas approved by the editorial group.

## BARA Board

**President:** Doug Baer

**Vice President:** Wayne Neumann

**Treasurer:** Larry Statland

**Secretary:** Gail Gabel

**Directors:**

Nancy Craig, Nathan Nankivell,  
Ross Taylor, Jake Boguski,  
Jennifer Cheng, Hengshen Liu

## Newsletter

**Production & Distribution**

**Ad Hoc Editorial Team:**

Doug Baer, Nancy Craig,  
Nathan Nankivel

**Layout Manager:** Bruce More

**Graphics Contributor:** Nancy Craig

**Advertising:** Ross Taylor

**Distribution:** Jennifer Cheng, Barb Lawton,  
Nancy Craig & 35 carriers

**Contact BARA:** [info@broadmead.ca](mailto:info@broadmead.ca)

## MEMBERSHIP APPLICATION FORM

**DATE:** \_\_\_\_\_ ☐ One Year (\$20) ☐ Two Years (\$35) ☐ Three Years (\$45)

**NAME:** \_\_\_\_\_  
A member of your family who resides in your home may be added to your membership (insert additional name above)

**ADDRESS:** \_\_\_\_\_

**EMAIL:** \_\_\_\_\_ **PHONE:** (\_\_\_\_\_) \_\_\_\_\_

MAIL A CHEQUE TO: Broadmead Area Residents' Association, PO Box 53527, RPO Broadmead, Victoria, BC V8X 5K2

OR

PAY ONLINE: <https://broadmead.ca/members/>